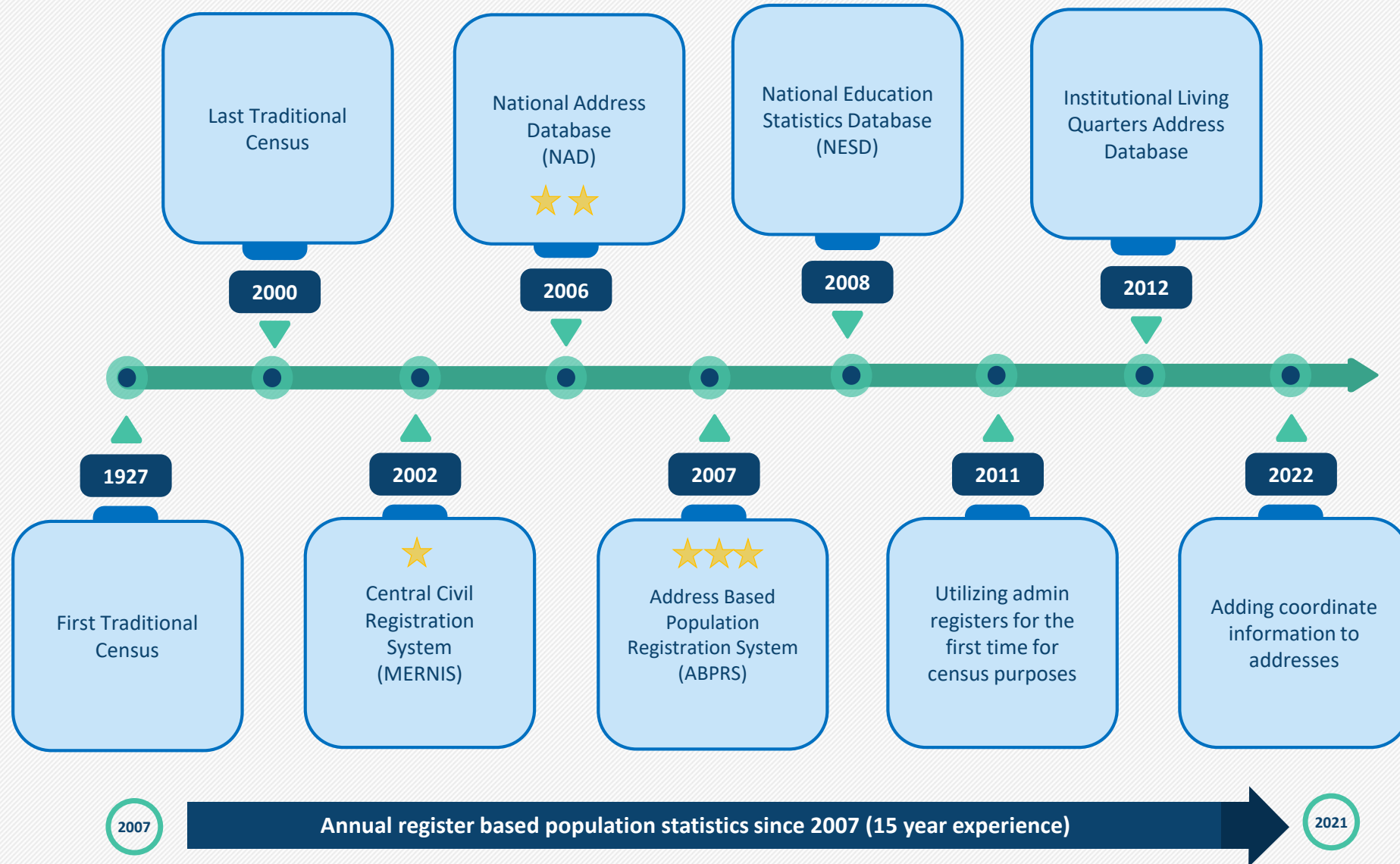




# 2021 Population and Housing Census of Türkiye



Turkish Statistical Institute  
Demographic Statistics Department



- ❑ The United Nations (UN) and European Union (EU) recommend that countries make a "population and housing census" in years close to years ending in "0" in order to obtain comparable statistics on population.
- ❑ In this context, studies on "2021 Population and Housing Census (PHC)" are ongoing by TurkStat based on the following international references:
  - **UNECE Conference of European Statisticians Recommendations for the 2020 Censuses of Population and Housing**
  - **UNSD Principles and Recommendations for Population and Housing Censuses**
  - **EU Regulations:**

<b>Regulation (EC) No 763/2008</b> of the European Parliament and of the Council on population and housing censuses (CFR) calls for implementing measures on:					<b>Regulation (EC) No 223/2009</b> allows a 'direct temporary statistical action':
Tech. specifications for the census topics and their breakdowns	Reference year	EU census programme and metadata	Quality reporting	Technical format for data transmission	Selected census topics geocoded to a 1 km <sup>2</sup> grid
<b>Regulation (EU) 2017/543 (CIR-1)</b>	<b>Regulation (EU) 2017/712 (CIR-2)</b>	<b>Regulation (EU) 2017/881 (CIR-3)</b>	<b>Regulation (EU) 2018/1799 (CIR-4)</b>		



☐ TurkStat has been implementing all statistical activities (including census) according to the **Official Statistics Programme**, based on the **Statistics Law of Türkiye**.

- Thus, **TurkStat does not need a special census law**.
- 2021 PHC and related issues were added to 2022-2026 term Official Statistics Programme.

☐ According to the mentioned Law:



In order to be used for the production of official statistics, the **institutions and organizations are obliged to submit or open to use of the TurkStat the records and other data files** they compile, process and store...

On the other hand, administrative registers which were obtained only for statistical purposes by TurkStat **cannot be shared with any institution or organization at microdata or record level.**

❑ Steering Committee was established (June 2018):

- Consists of a vice president and 5 related heads of departments of TurkStat

❑ Objectives of Census Steering Committee:

- To coordinate all processes of 2021 PHC
- To decide the working groups
- To decide the registers to be used
- To determine the needs (budget, IT infrastructure)

❑ Working groups on «**Labor Force Statistics**» and «**Quality**» were established.

❑ Local consultancy service (from academia and private sector) on «Missing Data Estimation» is provided.



### ❑ Available:

- Population (ABPRS): Demography, migration, household
- Address (NAD)
- Education (National Education Statistics Database)

### ❑ Not available/complete:

- Employment and Unemployment
- Buildings and Dwellings





- ❑ For housing characteristics, setting up a registration system for buildings and dwellings has been one of the institutional targets of TurkStat.
  - However, establishing a such a registration system will take time. It is obvious that the planned registration system will not be available during census period.
- ❑ In order to eliminate the lack of administrative registers in this area, a **Survey on Building and Dwelling Characteristics, 2021** was carried out by TurkStat in October 2021-March 2022 period.





## Survey on Building and Dwelling Characteristics, 2021

<b>Sampling unit</b>	Household
<b>Method</b>	CATI
<b>Sampling Frame</b>	Addresses registered in ABPRS, where households reside.
<b>Sampling Size</b>	306 thousand and 615 addresses
<b>Estimation Level</b>	Province (NUTS 3)
<b>Length of Questionnaire</b>	11 questions in two parts (Part 1: Building, Part 2: Dwelling)
<b>Average duration of interview</b>	~10 minutes
<b>Field Application</b>	4 October 2021 – 1 April 2022



- ❑ For census-type labour force characteristics, the target in the first step was to set up an integrated database called “**Population Characteristics Database (PCDB)**”.
  - It is planned that this database will be the substructure of the forthcoming register based census (particularly for labour force characteristics) and will also serve as an invaluable data source for the post-2021 PHC.
- ❑ Using Household **Labour Force Survey (LFS) data** to produce estimates for census purposes is the alternative method.



## Traditional Census

1927 1935 1940 1945 1950 1955 1960 1965 1970 1975 1980 1985 1990 2000

### 2011 Combined Census

(Registers + Large sample survey) \*

(\*2.2 mil. HHs)

### 2021 Register-Dominant Combined Census

(ABPRS + LFS + SBDC\*)

(\* 306 000 HHs)

**Ultimate target:** Changing the system from combined method to fully (100 %) register-based census

Main census types:  
**traditional census:** full field enumeration, whether in person or online; registers and administrative sources may be used to support the enumeration but not directly to obtain census data.  
**register-based census:** census based on data from registers and administrative sources, with no field data collection; may also include data from existing surveys not conducted for census purposes.  
**combined census:** some data obtained directly from registers or administrative sources, while other data are collected through field data collection conducted specifically for census purposes, covering the whole population or only a sample.  
**rolling census:** based on cumulative continuous sample survey covering whole country over an extended period.  
 Source: <https://statswiki.unec.org/display/censuses/Censuses+of+the+2020+round>



Address Based Population Registration System, 2021

4<sup>th</sup> February 2022



Population and Housing Census, 2021

19<sup>th</sup> December 2022



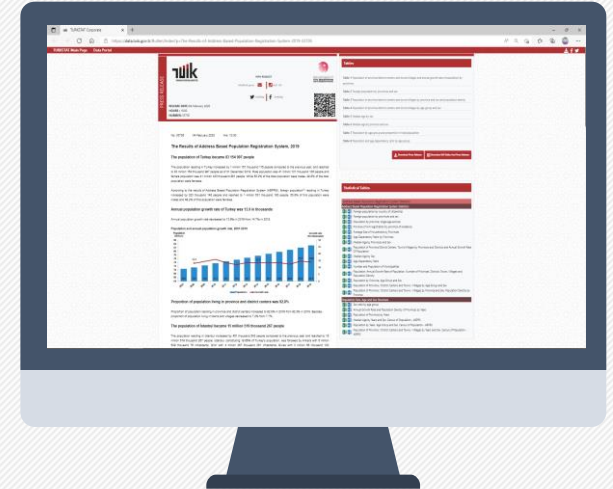
Survey on Building and Dwelling Characteristics, 2021

27<sup>th</sup> December 2022

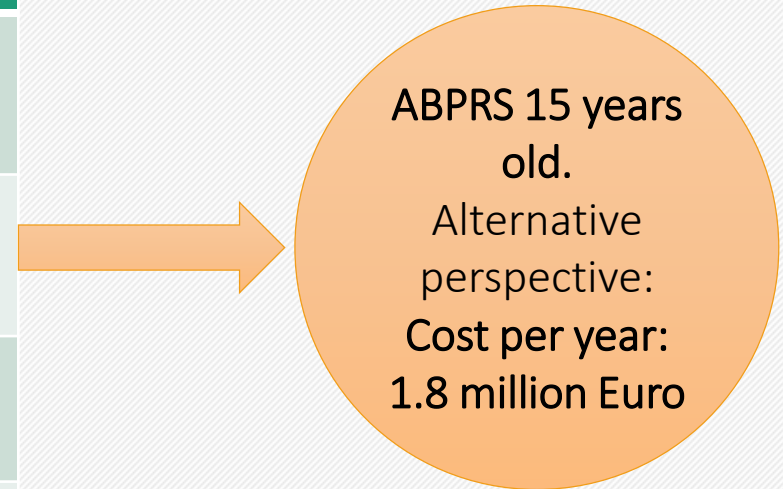


Internal Migration Statistics, 2021

28<sup>th</sup> December 2022



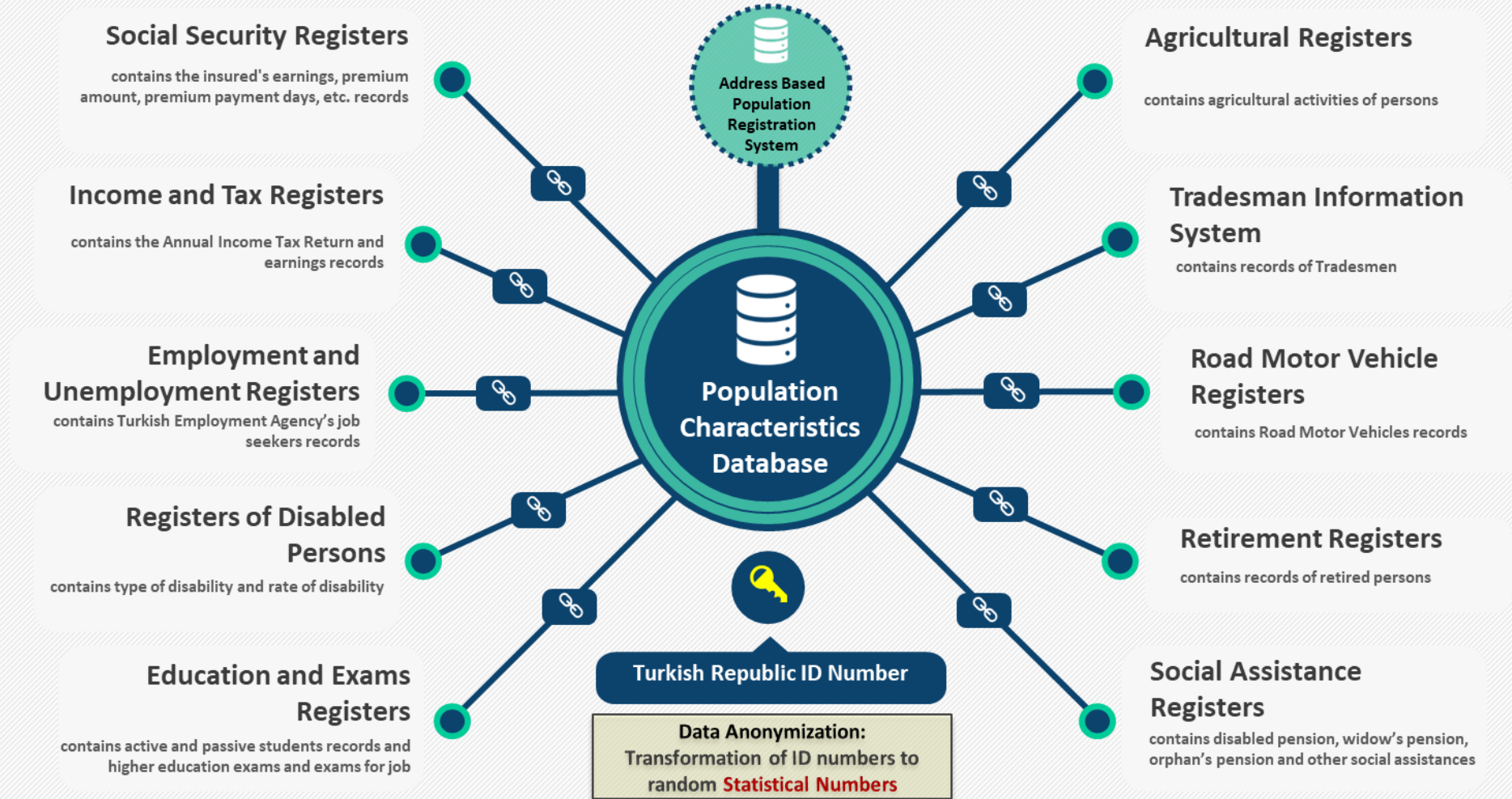
Census Year	Method	Cost (According to March 2022)
2000	Traditional	33 million Euro
2007	Establishment of the ABPRS	27 million Euro
2011	Combined	7 million Euro
2008-2021	Production from the ABPRS	0 Euro





# Population Characteristics Database

- ❑ Population Characteristics Database (PCDB) project, of which responsibility was given to TurkStat according to the Eleventh National Development Plan, will be used for statistical purposes.
- ❑ This database can basically be defined as **a database established by the integration of ABPRS with a wide variety of other administrative registers**. In addition to the population, demography and migration characteristics in ABPRS, PCDB will provide integrated information on the socio-economic characteristics of the individuals living in the country.



Thanks for your attention

